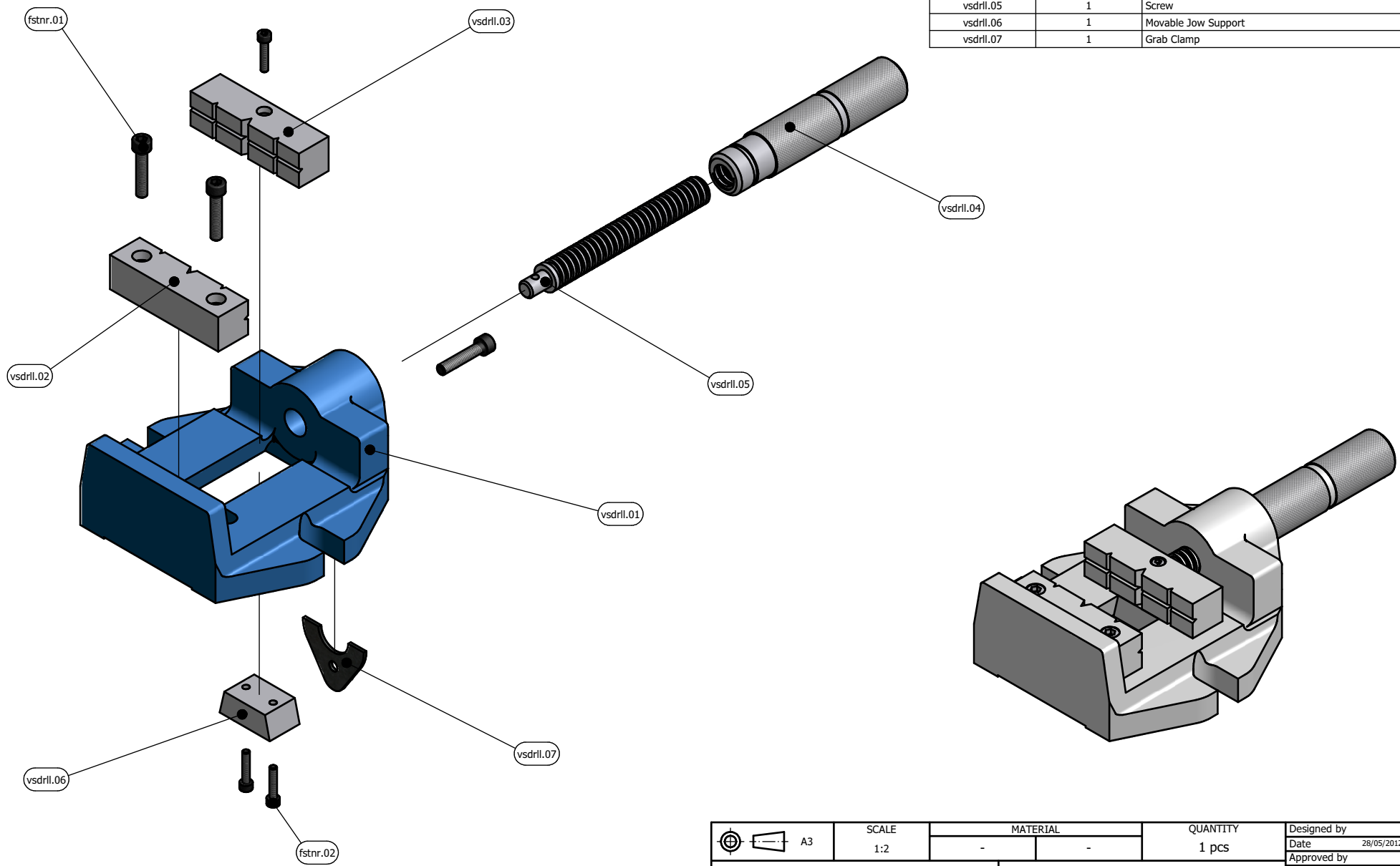
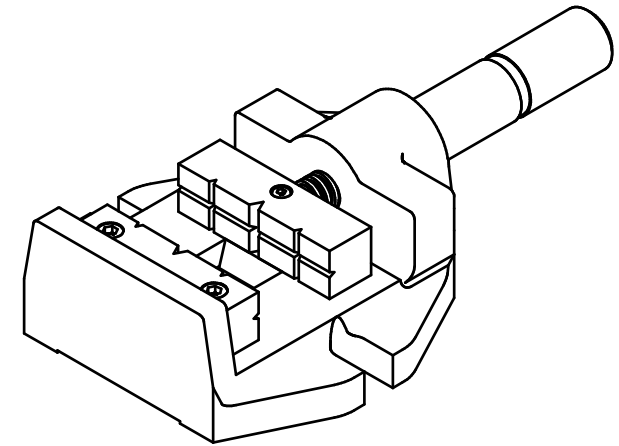
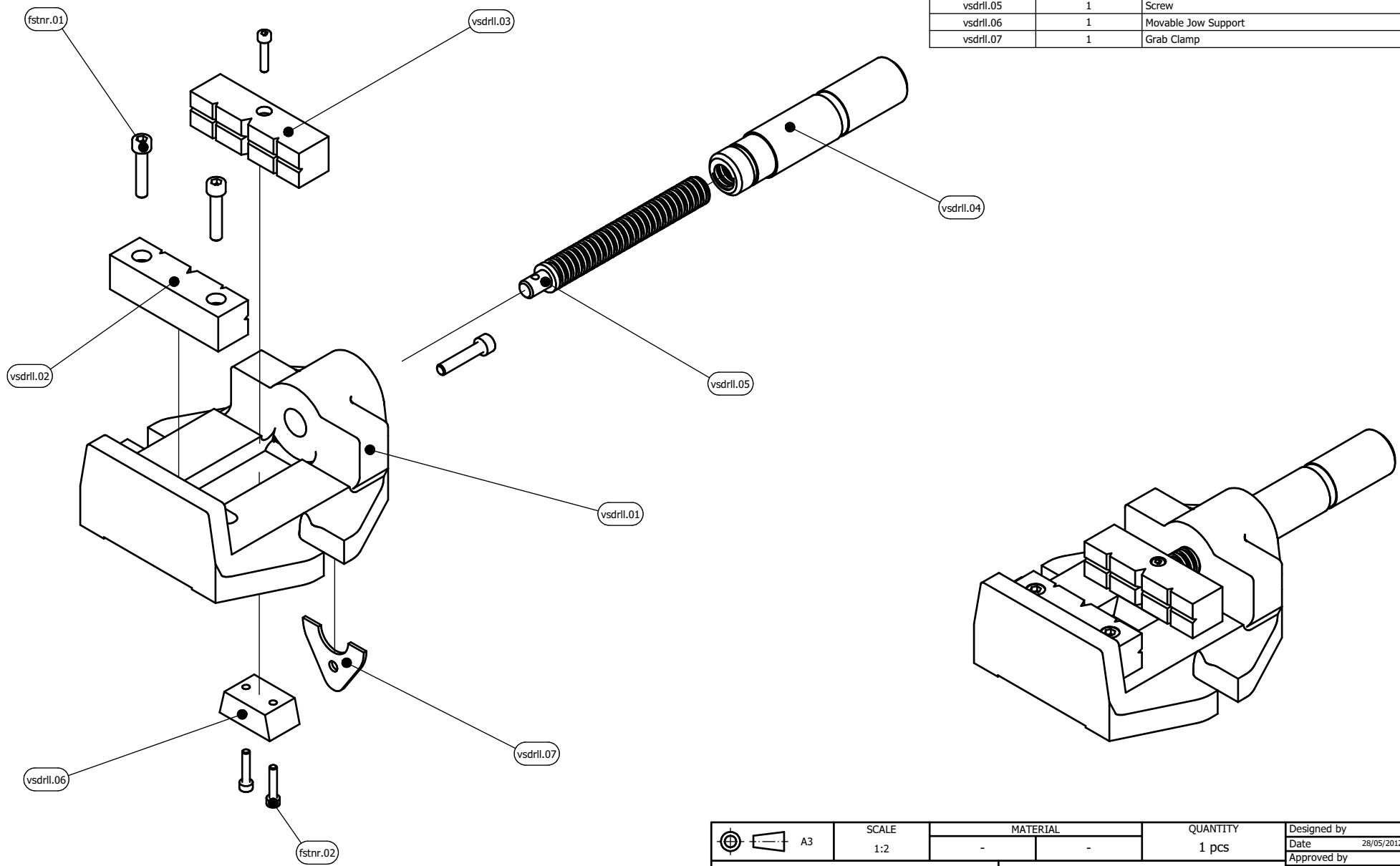


ITEM	QTY	TITLE
fstrn.01	3	Socket Head M6 x 30
fstrn.02	3	Socket Head M4 x 20
vsdrll.01	1	Base
vsdrll.02	1	Jow
vsdrll.03	1	Movable Jow
vsdrll.04	1	Clamp Screw
vsdrll.05	1	Screw
vsdrll.06	1	Movable Jow Support
vsdrll.07	1	Grab Clamp

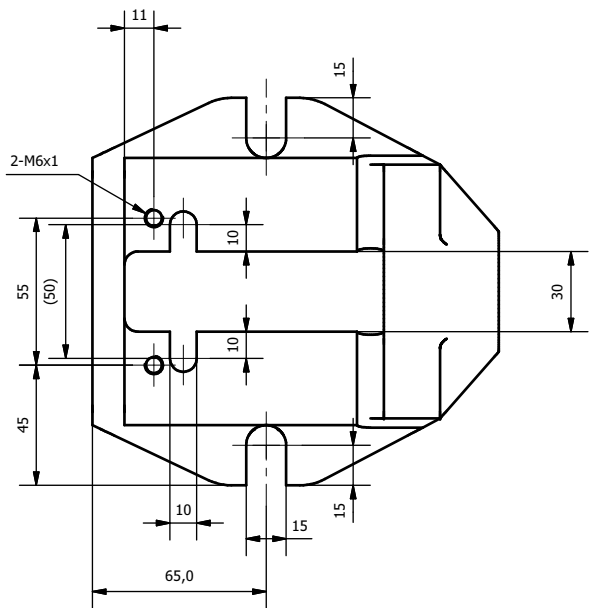


A3	SCALE 1:2	MATERIAL		QUANTITY	Designed by Date 28/05/2012 Approved by Date Job Date Attachment 1 Sheet 8
		-	-	1 pcs	
MESIN FT UNY			WISE DRILL		Attachment 1 Sheet 8
			vsdrll	-	

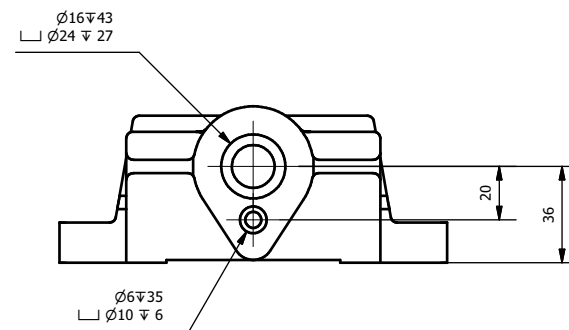
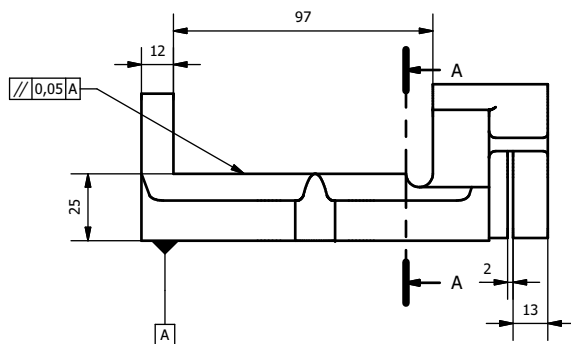
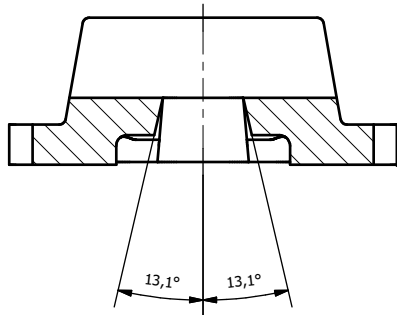
ITEM	QTY	TITLE
fstrn.01	3	Socket Head M6 x 30
fstrn.02	3	Socket Head M4 x 20
vsdrll.01	1	Base
vsdrll.02	1	Jow
vsdrll.03	1	Movable Jow
vsdrll.04	1	Clamp Screw
vsdrll.05	1	Screw
vsdrll.06	1	Movable Jow Support
vsdrll.07	1	Grab Clamp



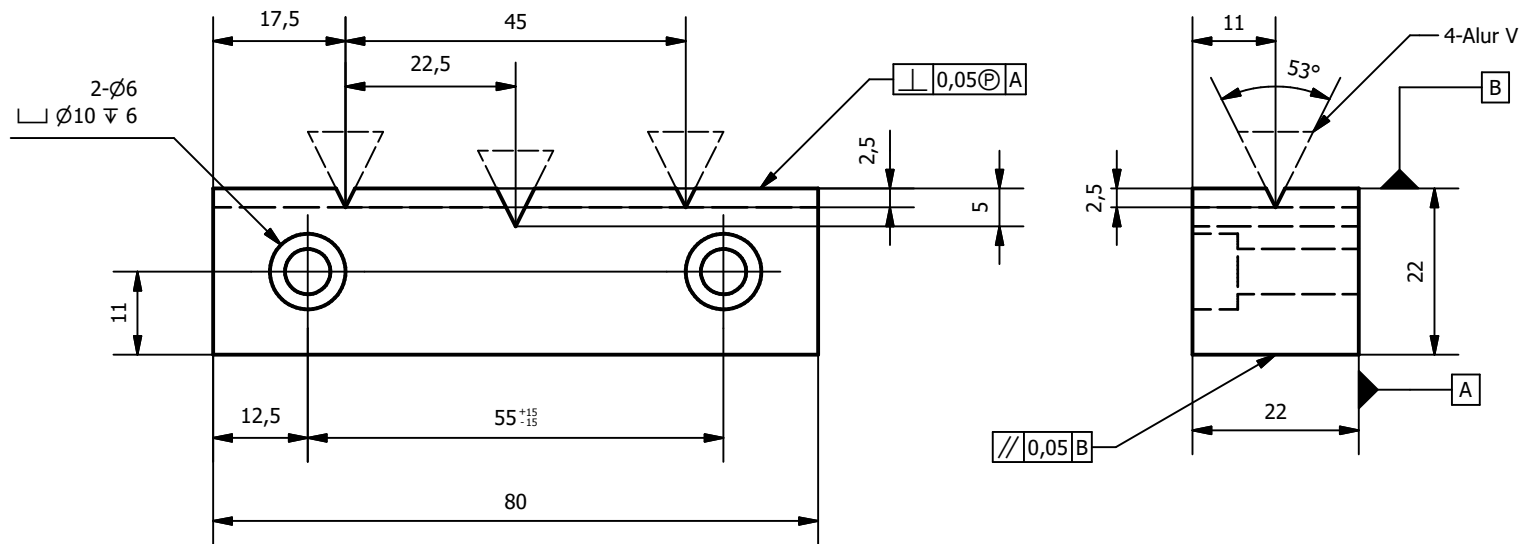
A3	SCALE 1:2	MATERIAL		QUANTITY	Designed by Date 28/05/2012 Approved by Date Job Date Attachment 1 Sheet 8
		-	-	1 pcs	
MESIN FT UNY			WISE DRILL		
			vsdrll	-	



A-A
(1:2)




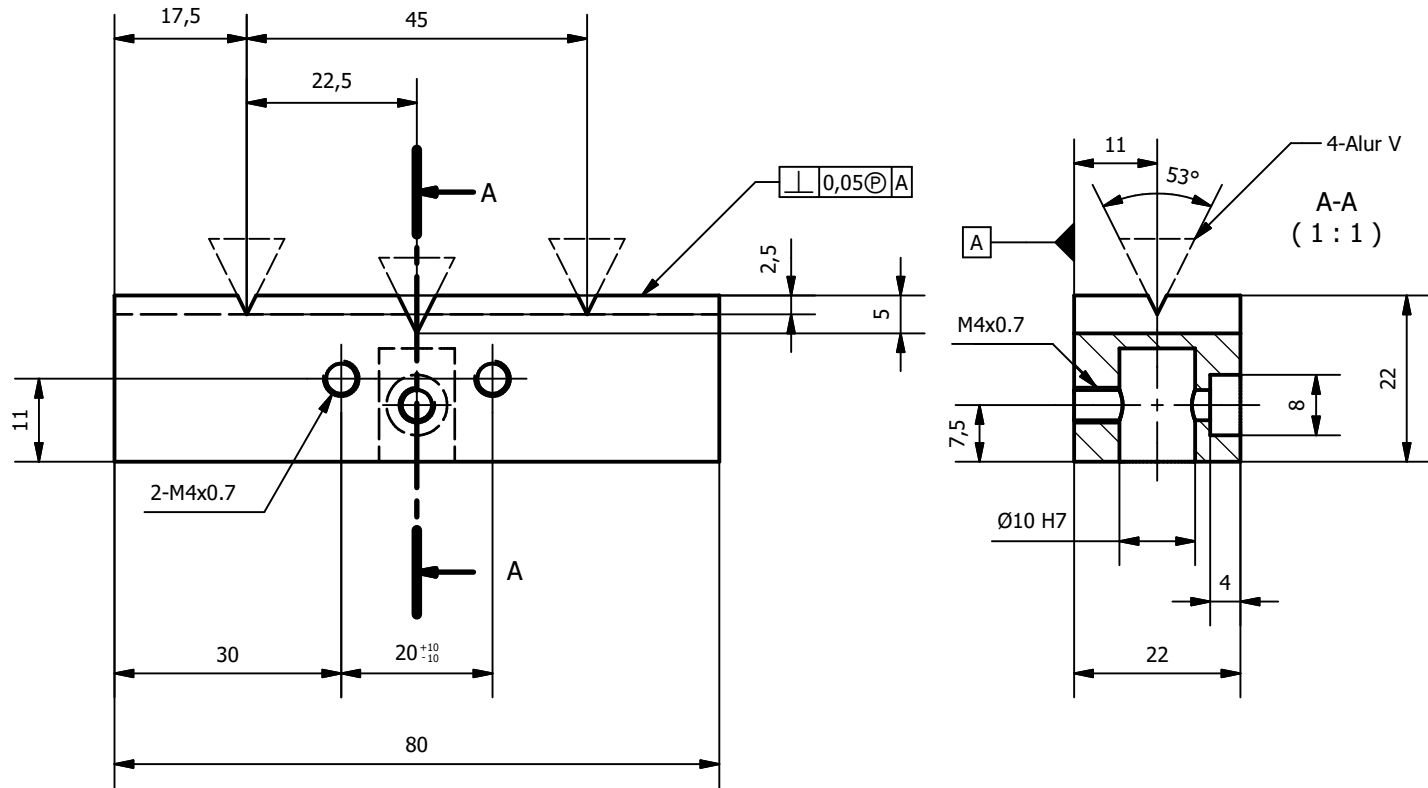
A3	SCALE	MATERIAL	QUANTITY	Designed by
	1:2	-	1 pcs	Date 28/05/2012
MESIN FT UNY			BASE	
			vsdrl	-
Attachment 1		Sheet 2		8



N7 / *Seluruhnya kecuali ditentukan lain*

Tol ±0,05

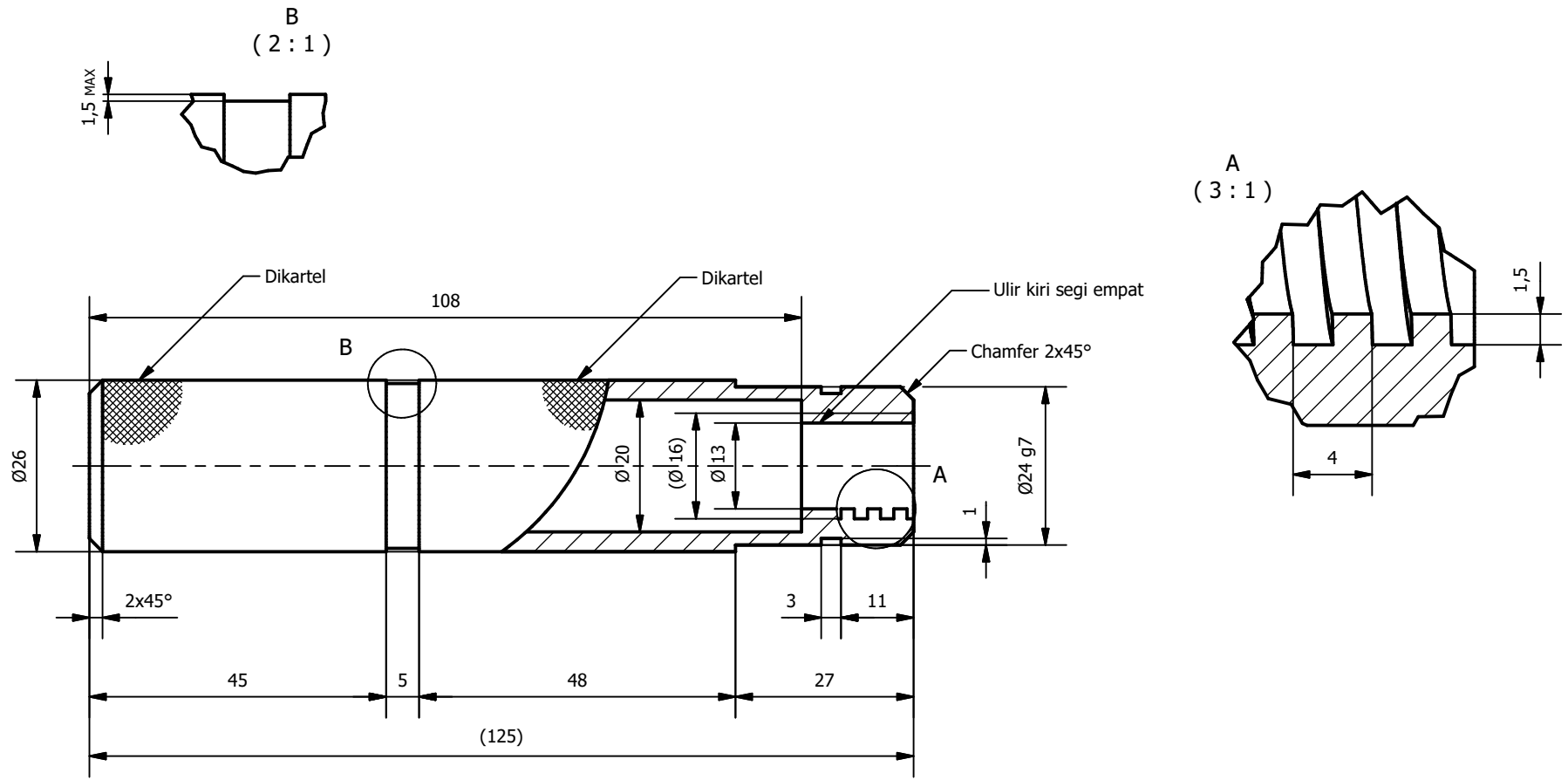
 A4	SCALE	MATERIAL		QUANTITY	Designed by
	1:1	Mild Steel	100x25x25	1 pcs	Date 28/05/2012
MESIN FT UNY		JOW			Approved by
		vsdrll.02	-	Date	
				Date	Attachment 1
				Date	Sheet 3
				Date	8



N7 / *Seluruhnya kecuali ditentukan lain*

Tol ±0,05

	SCALE	MATERIAL		QUANTITY	Designed by
	1:1	Mild Steel	100x25x25	1 pcs	Date 28/05/2012
MESIN FT UNY				MOVABLE JOW	Approved by
				vsdrll.03	-
				Attachment 1	Sheet 4 / 8



N7 / *Seluruhnya kecuali ditentukan lain*
 Tol ±0,05

Gunakan acuan teori ulir segi empat dalam, kartel, tabel suaian lubang, tabel ukuran pasak, teknik pengecaman blank, teknik pengefraisan gigi cacing, tabel RPM, metrologi dan K3, serta SOP.

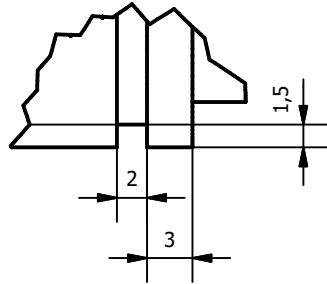
Mahasiswa wajib mengecek dan membenahi gambar di atas.

Batang ulir dan Batang pemutar sebagai bagian komponen dari alat Ragum Bor yang akan dirakit pada semester berikutnya.

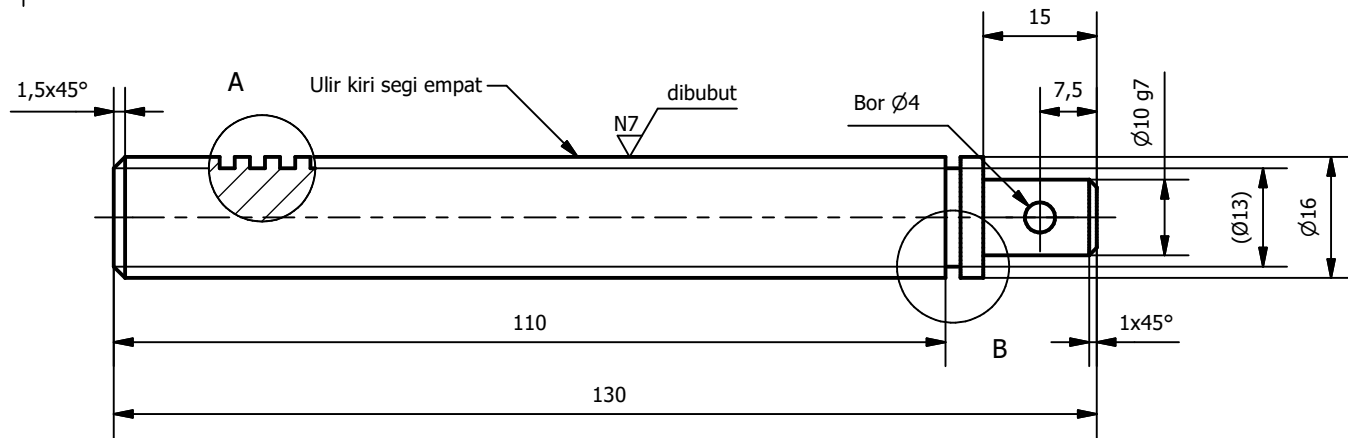
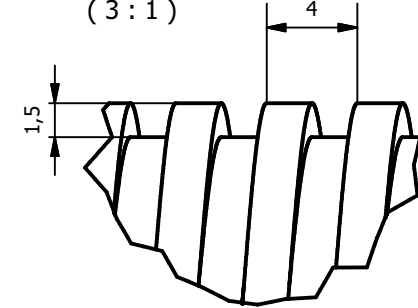
A4	SCALE	MATERIAL		QUANTITY	Designed by	
	1:1	Mild Steel	Ø38x160	1 pcs	Date 28/05/2012	
MESIN FT UNY				CLAMP SCREW		Approved by
						Date
vsdrll.04				-		Job
						Date
Attachment 1		Sheet 5		8		



B
(2 : 1)



A
(3 : 1)



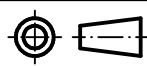
N7 / *Seluruhnya kecuali ditentukan lain*

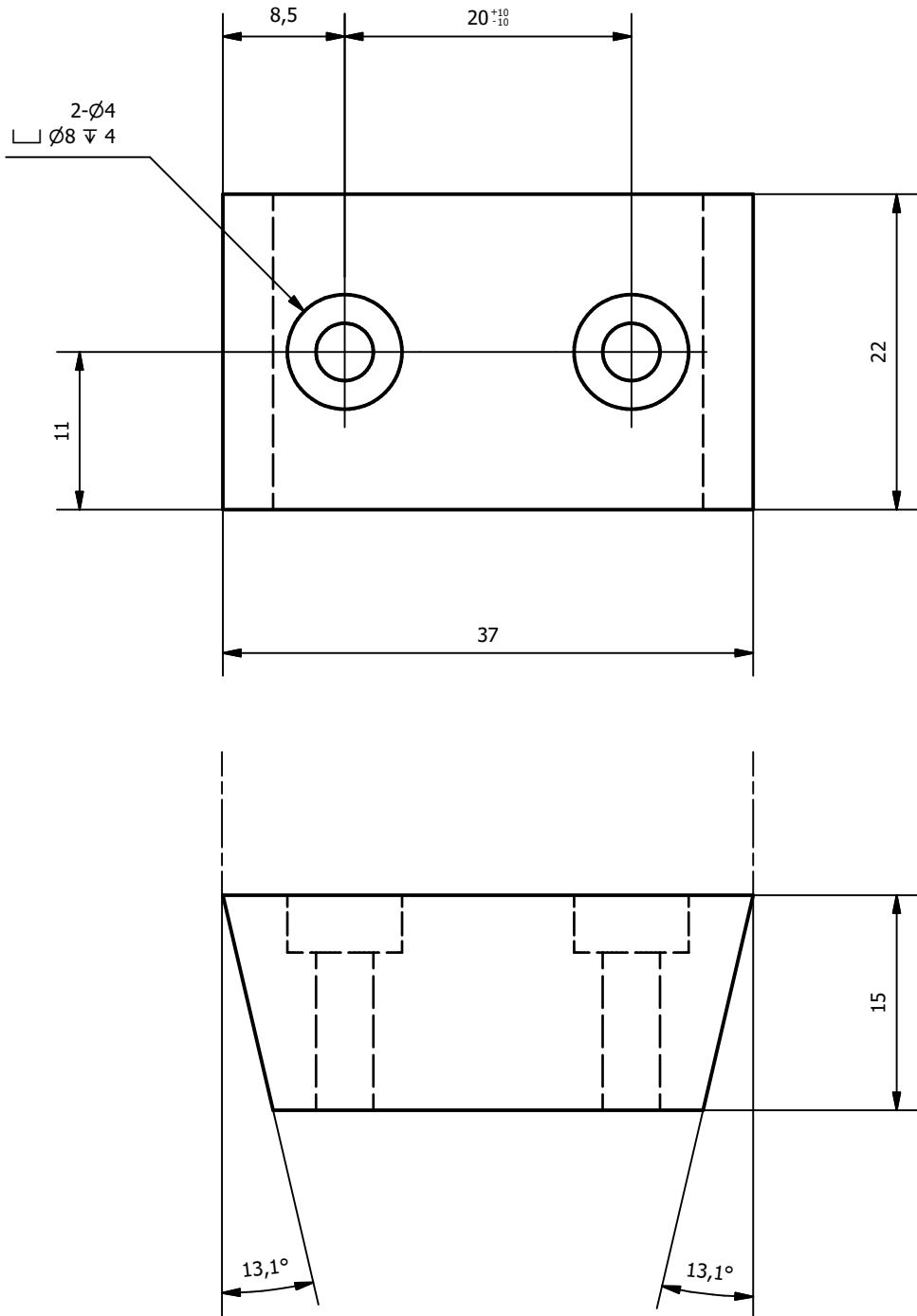
Tol ±0,05

Gunakan acuan teori ulir segi empat luar, kartel, tabel suaiian poros, tabel ukuran pasak, teknik pencekaman blank, teknik pengefraisan gigi cacing, tabel RPM, metrologi dan K3, serta SOP.

Mahasiswa wajib mengecek dan membenahi gambar di atas.

Batang ulir dan Batang pemutar sebagai bagian komponen dari alat Ragum Bor yang akan dirakit pada semester berikutnya.

 A4	SCALE	MATERIAL		QUANTITY	Designed by
	1:1	Mild Steel	Ø38x160	1 pcs	Date 28/05/2012
MESIN FT UNY				SCREW	Approved by
				vsdrll.05	-
					Job
					Date
				Attachment 1	Sheet 6
					8

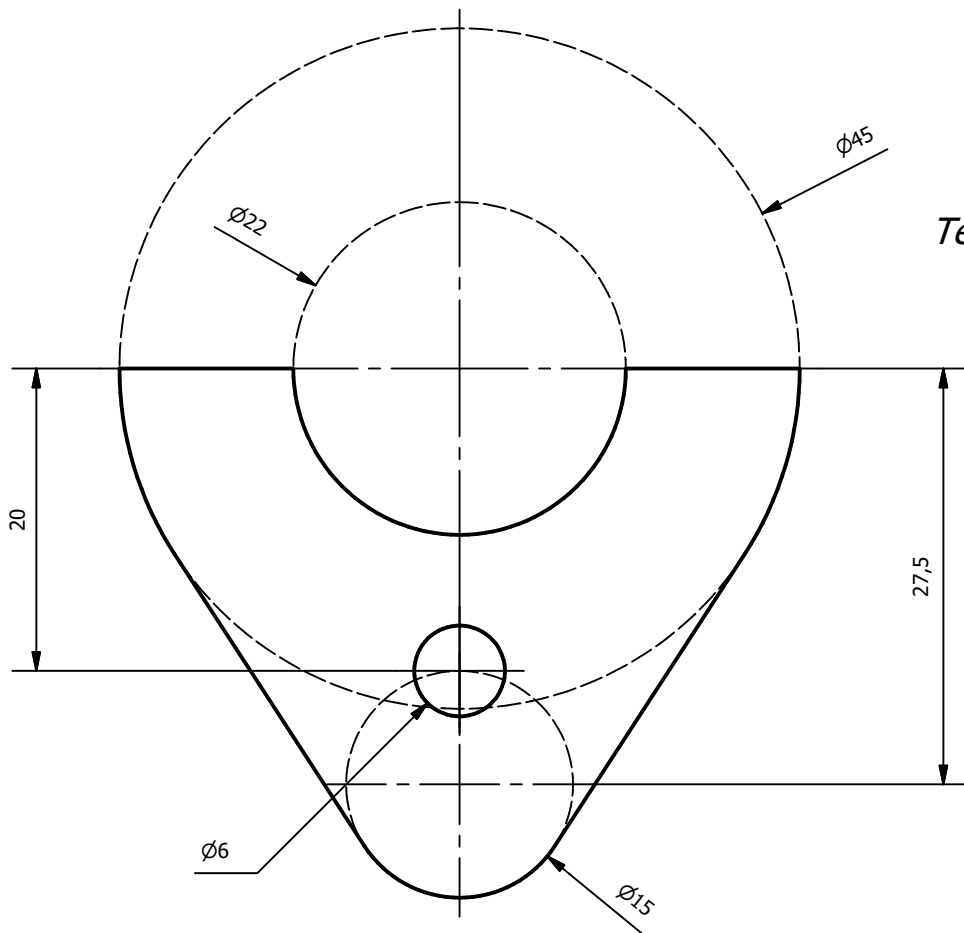
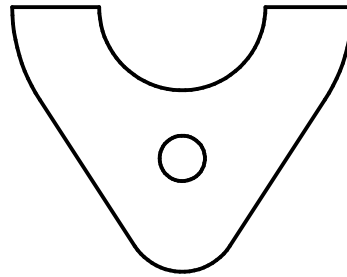


N7 / *Seluruhnya kecuali ditentukan lain*

Tol ±0,05

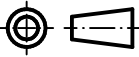
A4	SCALE	MATERIAL		QUANTITY	Designed by	
	2:1	Mild Steel	40x25x25	1 pcs	Date 28/05/2012	
MESIN FT UNY					MOVABLE JOW SUPPORT	
					vsdrll.06	
					Date	Attachment 1
					Sheet 7	8

Mal
1:1



Tebal=2

Tol ±0,1

 A4	SCALE 2:1	MATERIAL		QUANTITY	Designed by		
	Plat Eyszer	50x50x2	1 pcs	Date 28/05/2012			
MESIN FT UNY				GRAB CLAMP		Approved by	
				vsdrill		-	Date
				Attachment 1		Sheet 8	