

# Seni Rupa Aegea

# Peta



# Karya Perunggu



# Seni Rupa Sikladik

- Akhir Neolitik dan Awal Zaman Perunggu
- Masyarakat
- Seni Rupa

# Terakota dari Kepulauan Sikladik



# *Pemain Harpa*



# Seni Rupa Minoa

# Sir Arthur Evans

- Kebangsaan: Inggris
- 1851-1941
- Penggalian purbakala mulai 1894-1903 (1930an ketika ditinggalkan)



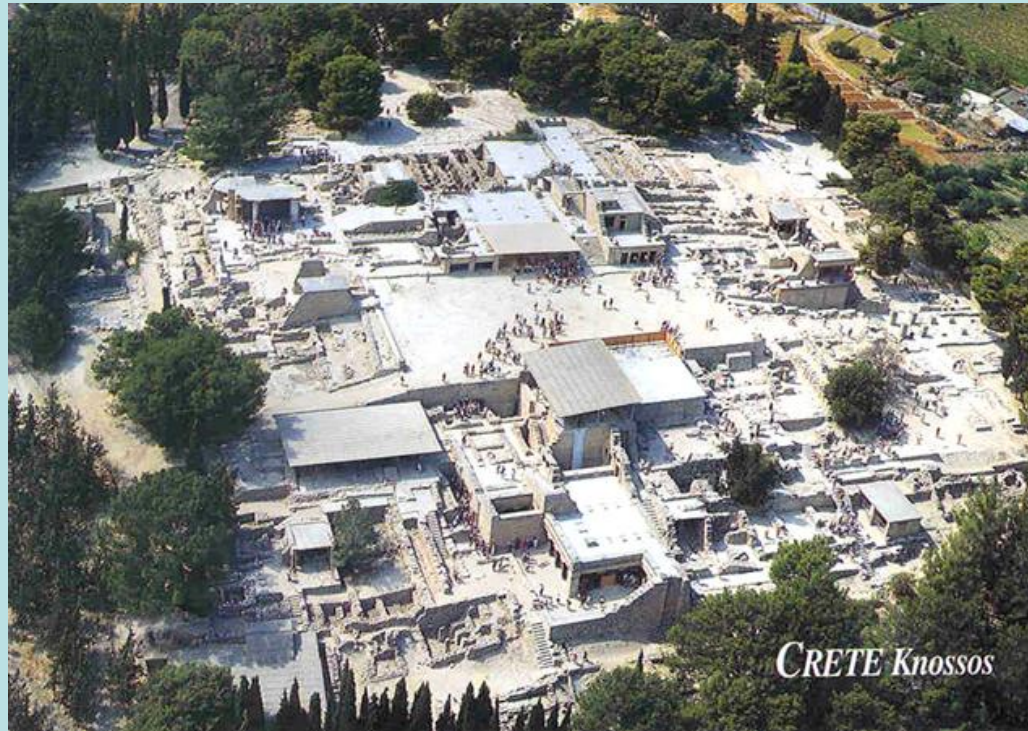


# Pulau Kreta

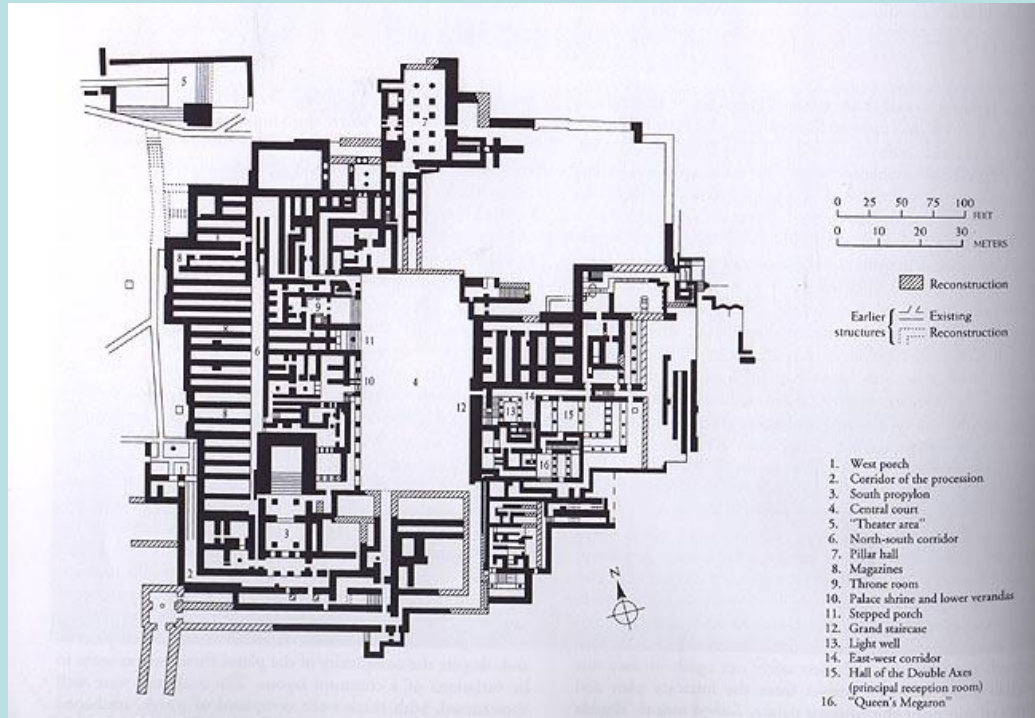
- Terbesar di Kepulauan Aegea
- Mampu mencukupi kebutuhan ekonomi sendiri
- Dari 1900-1375SM



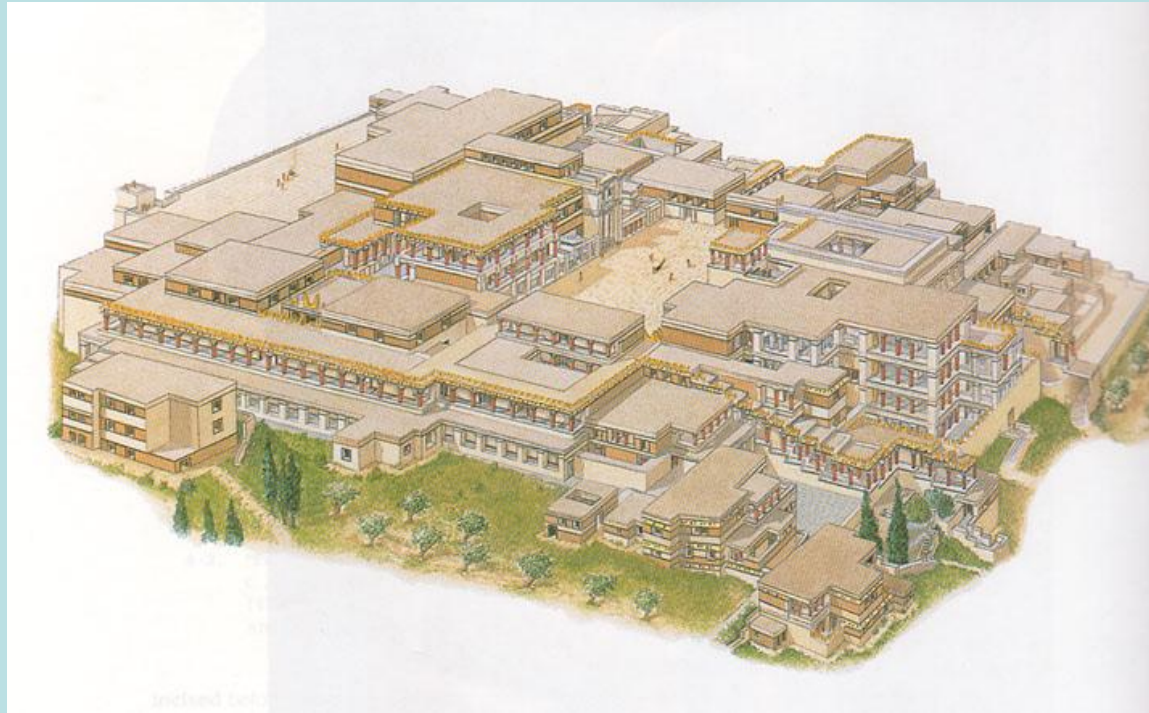
# *Kompleks Istana Knossos, 2000-1375 (atau 1500), Minoa*



# Layout Istana



# Rekonstruksi



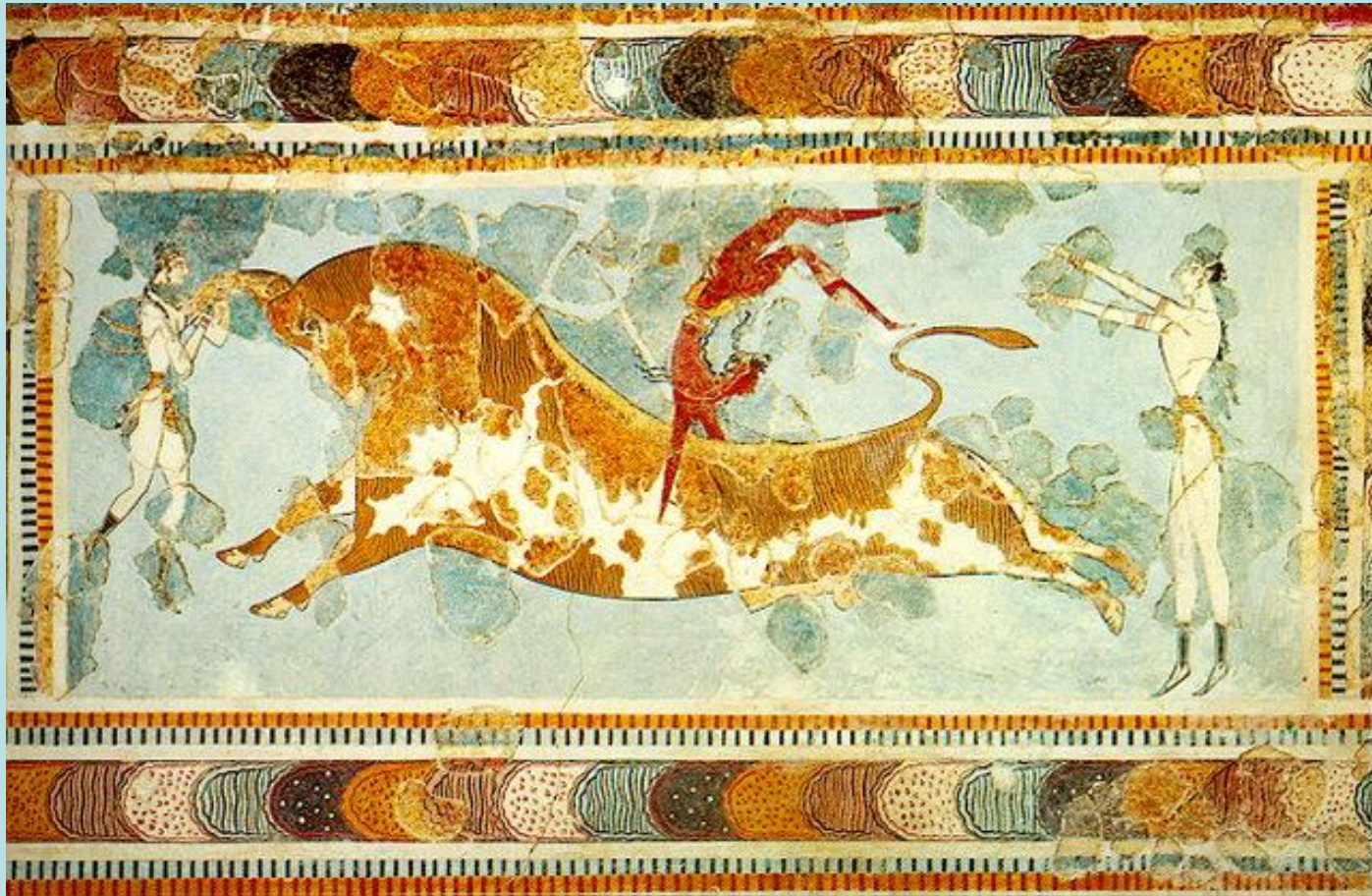
# *Ruang Tahta Raja & Megaron Ratu*



# Gerbang Utara



*Fresko Lompat Banteng (Toreador Fresco),  
c.1450-1375 (or 1500), Minoa*

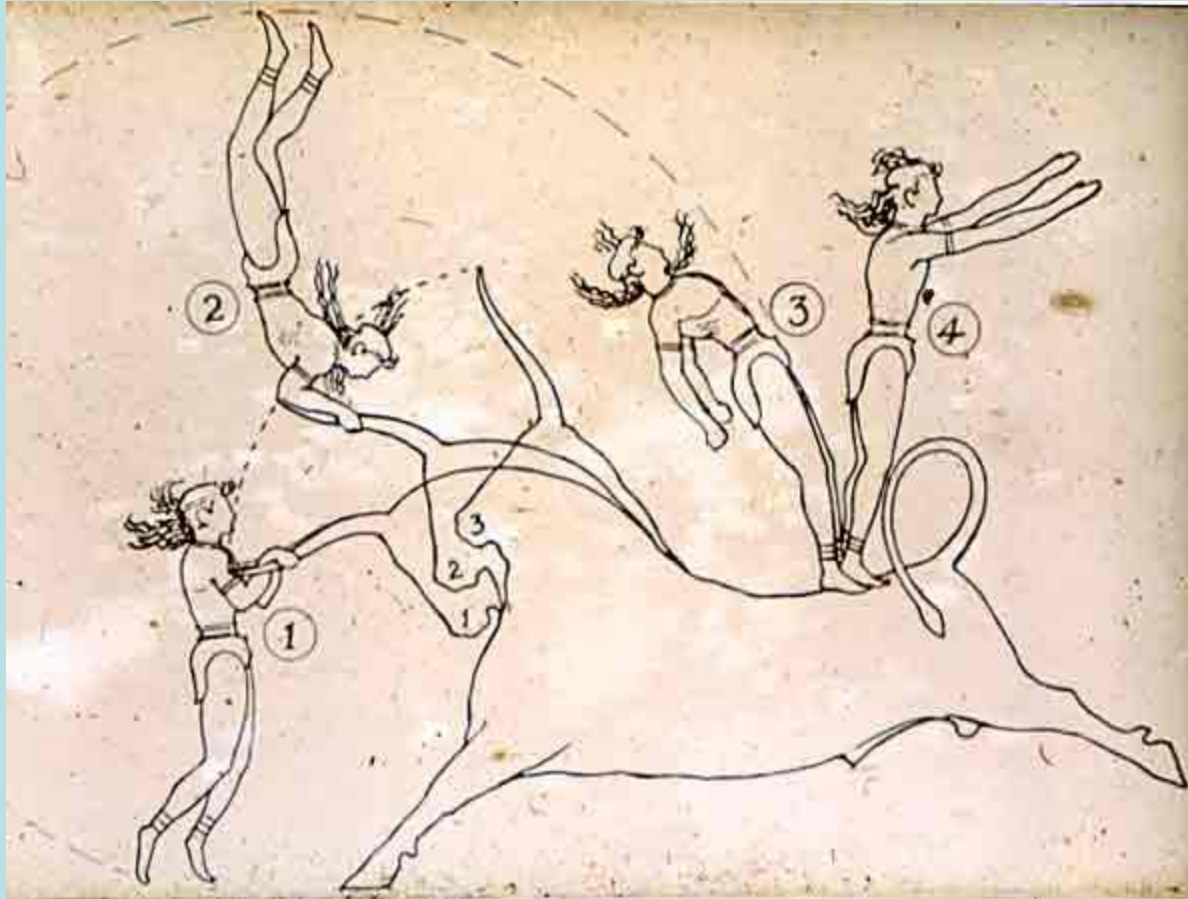


# Fresko Minoa





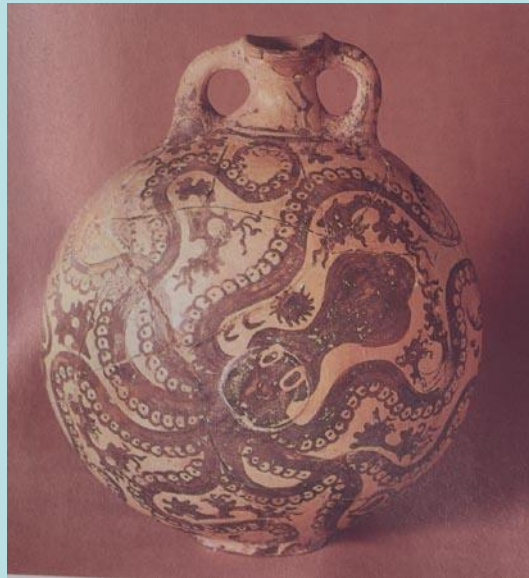
# Diagram



# *Guci Kamares*



# *Guci Ikan Gurita*



# *Anting-anting Lebah Emas*



*Mangkuk Vapheio, ±1650-1450 SM (atau  
1500 SM), Minoa*



*Wanita atau Dewi dengan Ular (Snake Goddess), 1600-1550 SM (or 1500 SM),  
Minoa*



*Rhyton Kepala Banteng*, c.1550-1450  
SM (atau 1500 SM), Minoa



**Mikeneea**



# Peta



# *Benteng Tiryns*



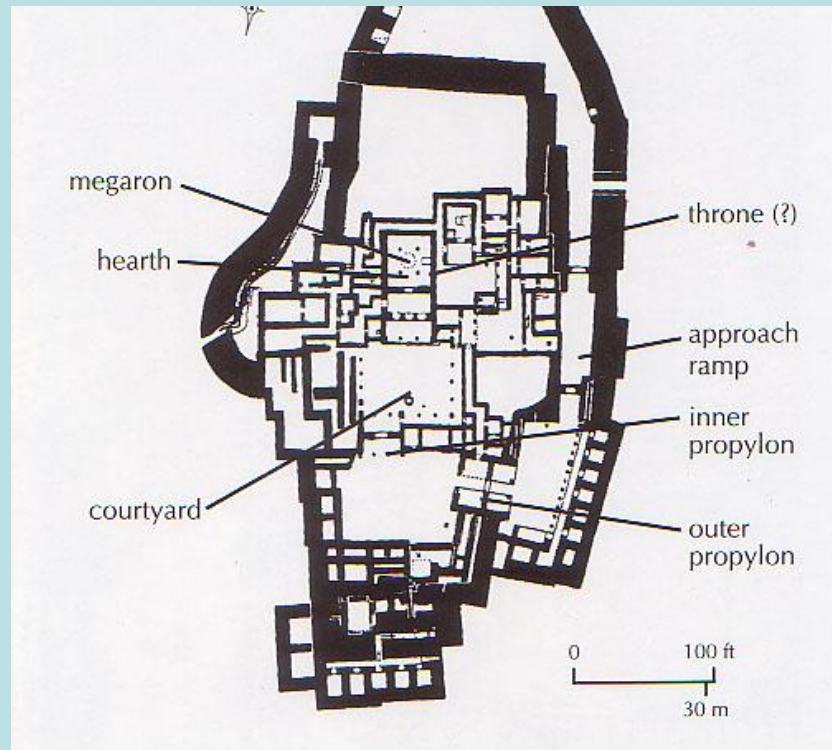
# Dinsing Benteng Tiryns



# Bagian Dalam



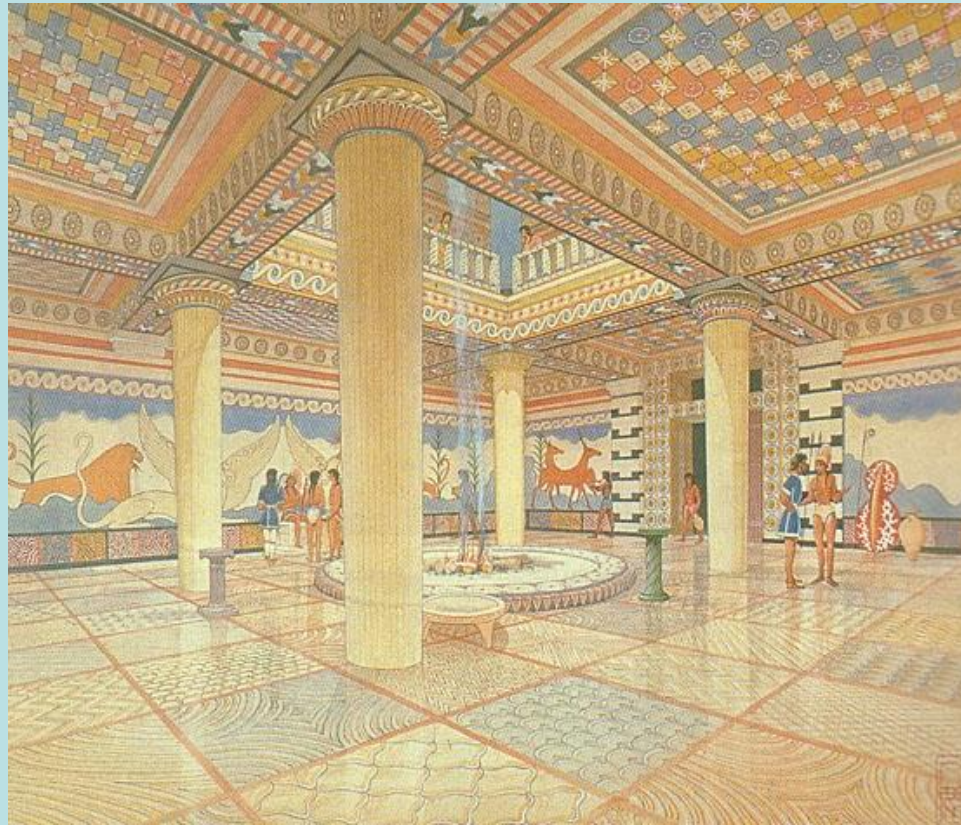
# Layout



# Bagian Dalam



# Megaron



*Benteng di Mikenea, 1600-1200 SM (atau  
1250 SM), Mikenea*





# Heinrich Schliemann



- 1822 - 1890
- Mendapat inspirasi dari Karya sastra Homer
- Penggalan di Hissarlik

# *Gerbang Singa di Mikeneea*



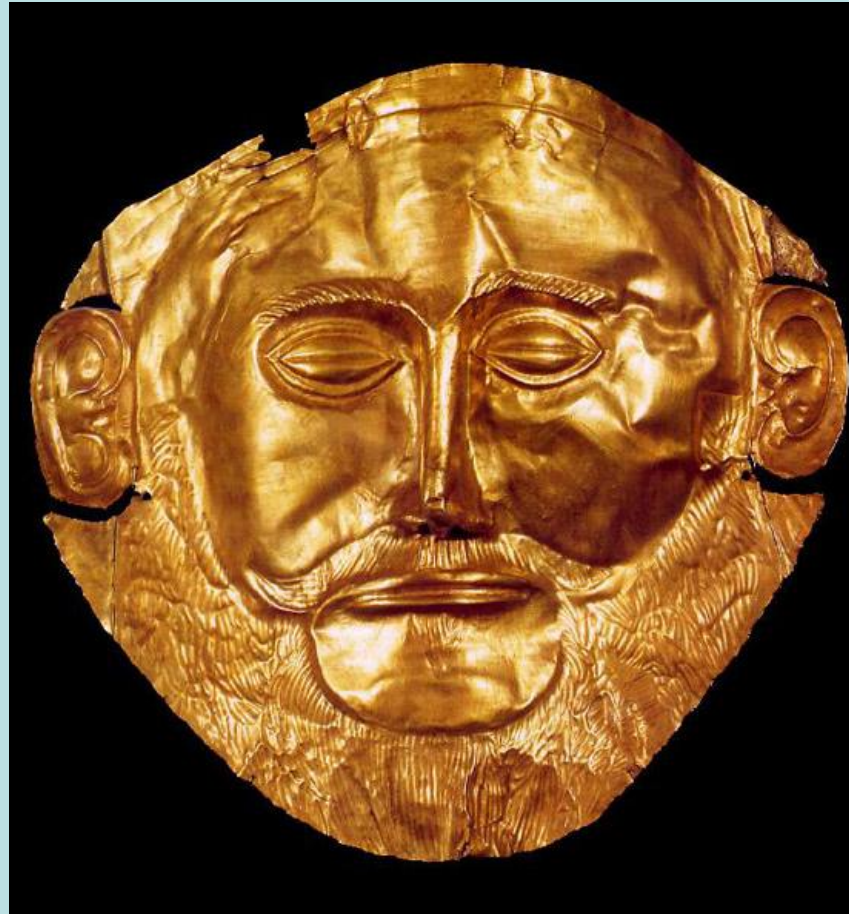
# Gerbang Singa



# Kuburan Bundar & Kuburan Sarang Lebah



*Topeng Agamemnon, c.1600-1550SM*  
(atau 1250SM), Mikeneea



*Dua Wanita dan Seorang Anak, c.1400-  
1200SM (or c.1250SM, Mikenea*



# *Jambangan Prajurit*

