

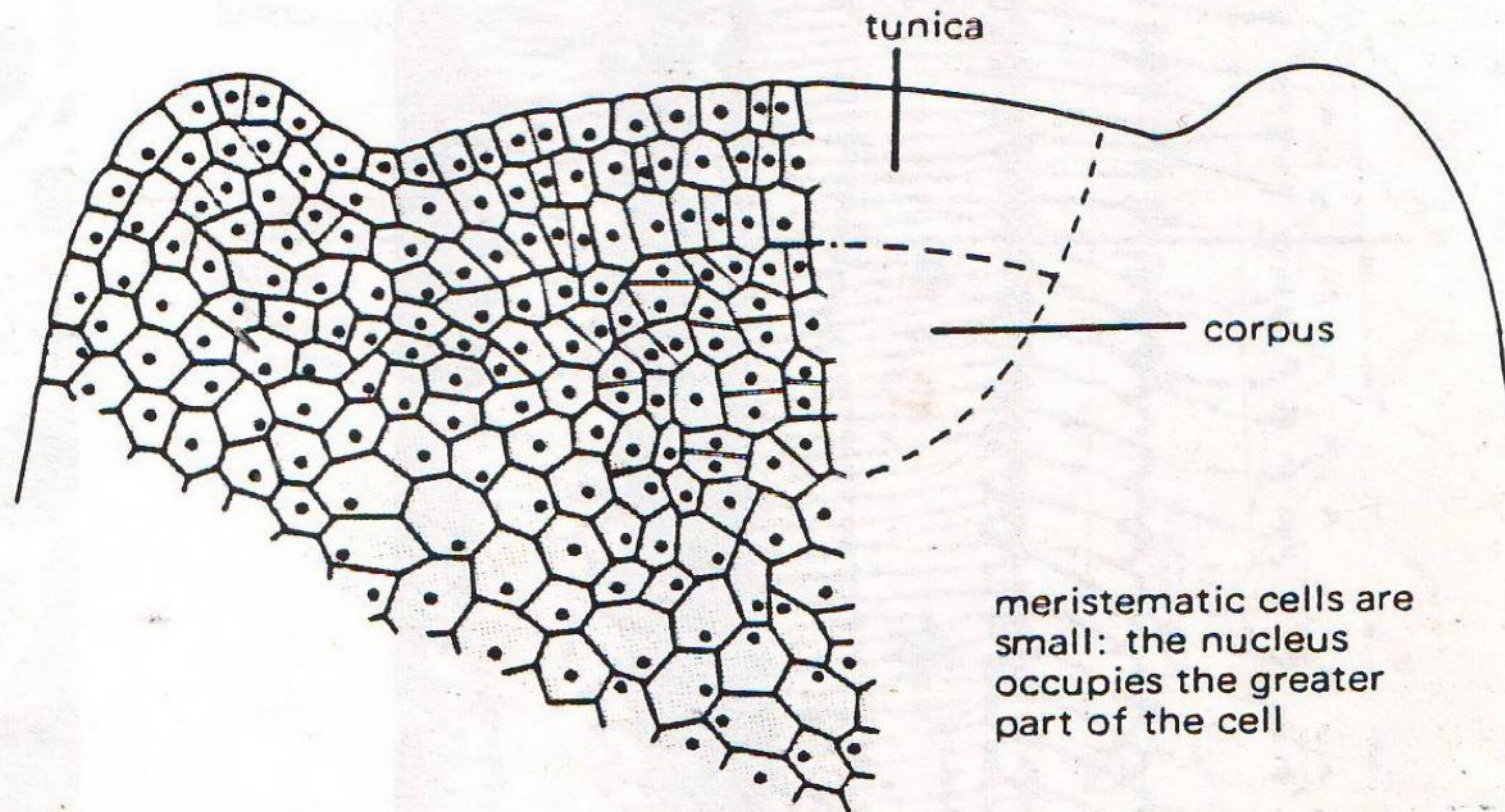
JARINGAN MERISTEM

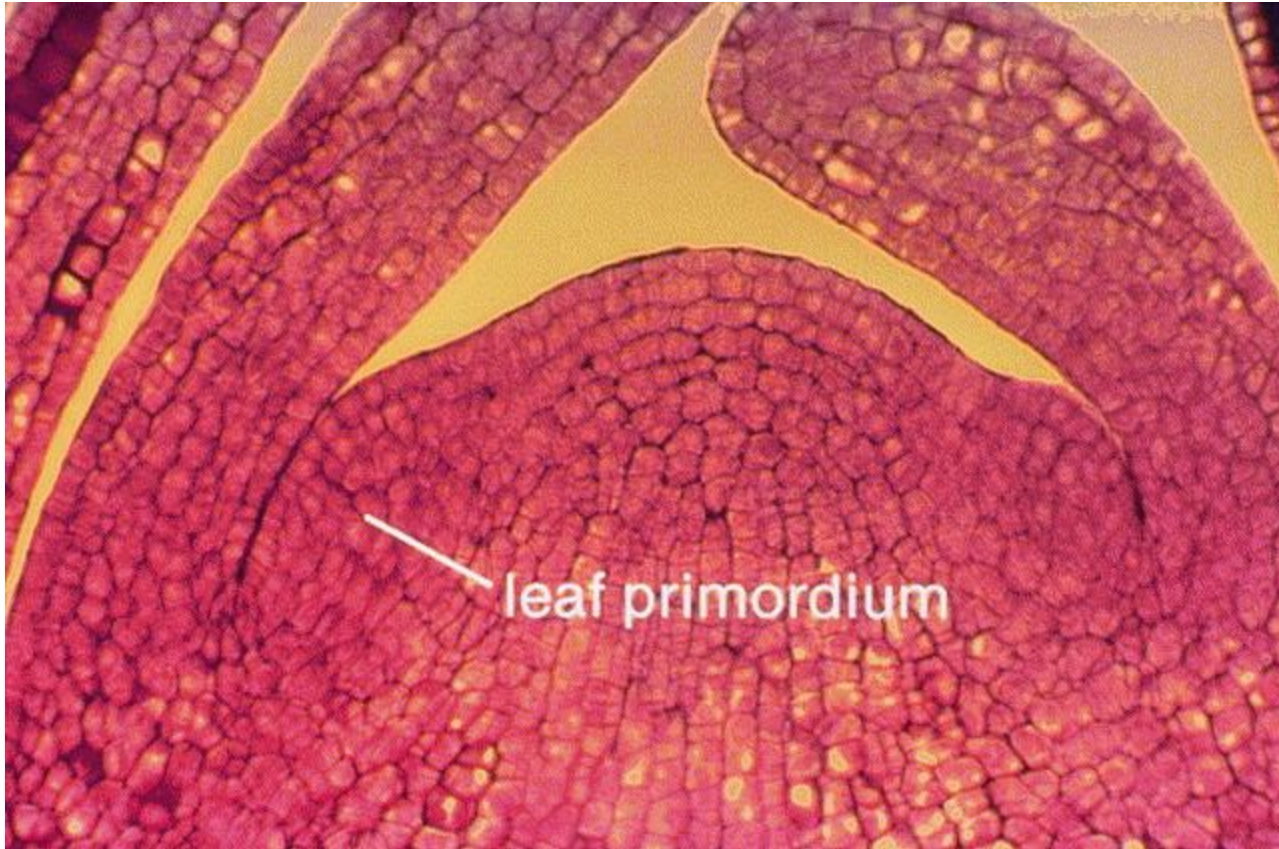
- • Ciri-ciri antara lain:
 1. Berdinding tipis
 2. Aktif membelah
 3. Bersifat embrional
 4. Plastida berupa proplastida
 5. Bentuk isodiametris
 6. Vakuola kecil
 7. Inti sel besar
 8. Sitoplasma padat

KLASIFIKASI MERISTEM

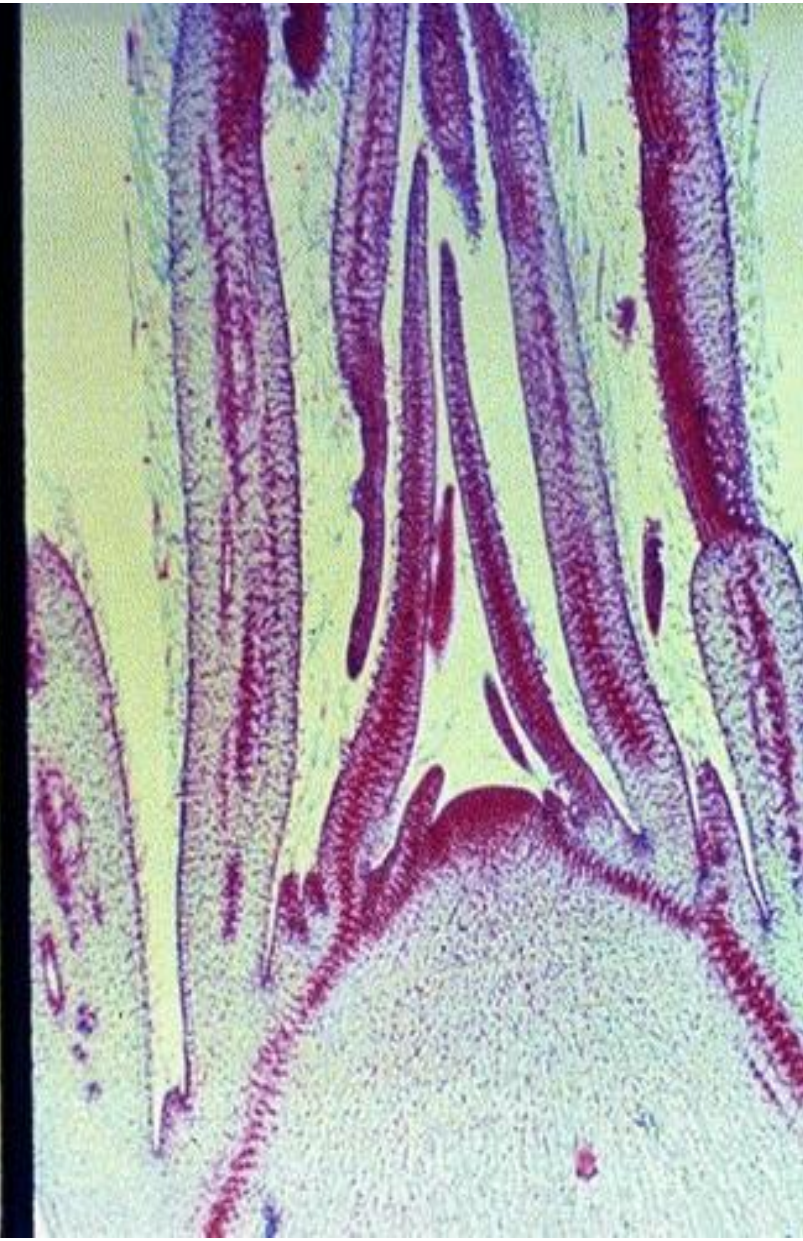
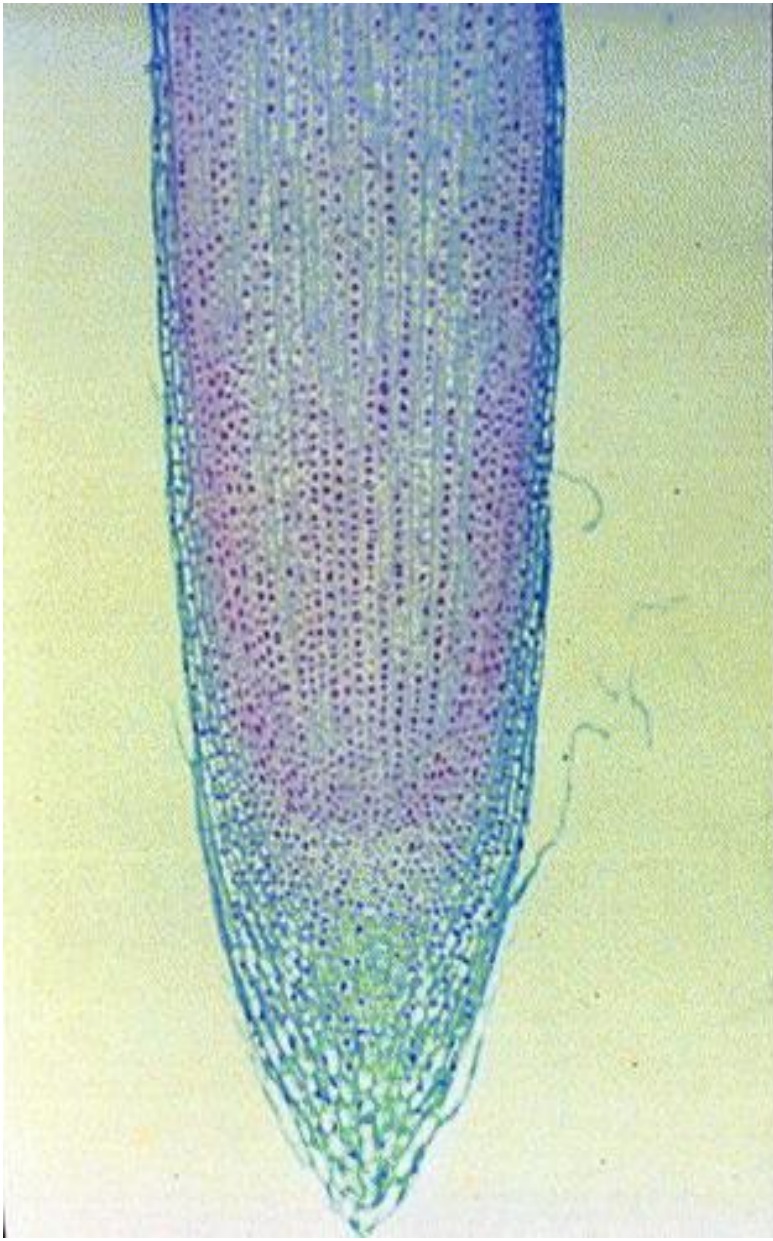
- Berdasarkan asal/perkembangan:
 1. Mer. Primer
 2. Mer. Sekunder
- Berdasarkan Posisi:
 1. Mer. Apikal
 2. Mer. Lateral
 3. Mer. Interkalar

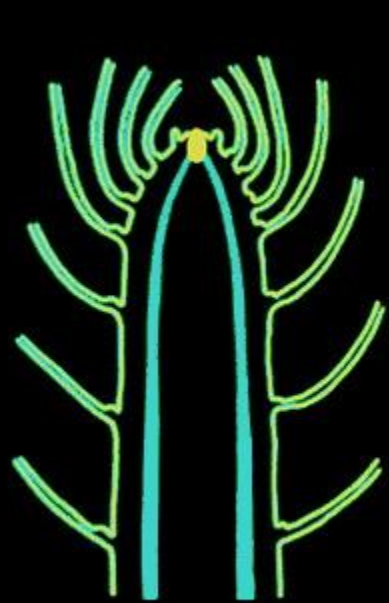
Figure 1.2(iv) Drawing of cells of the apical meristem seen in LS





leaf primordium



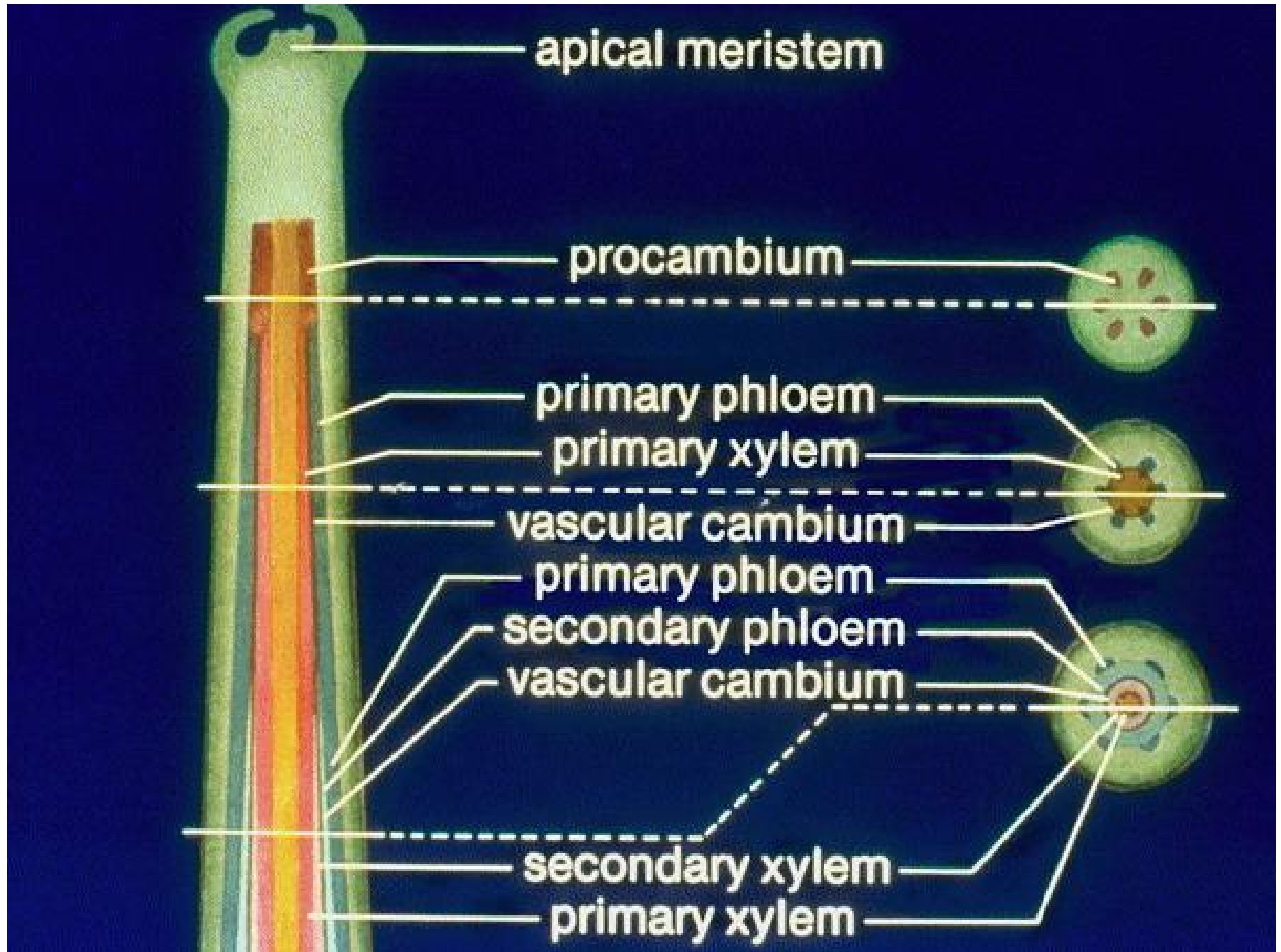


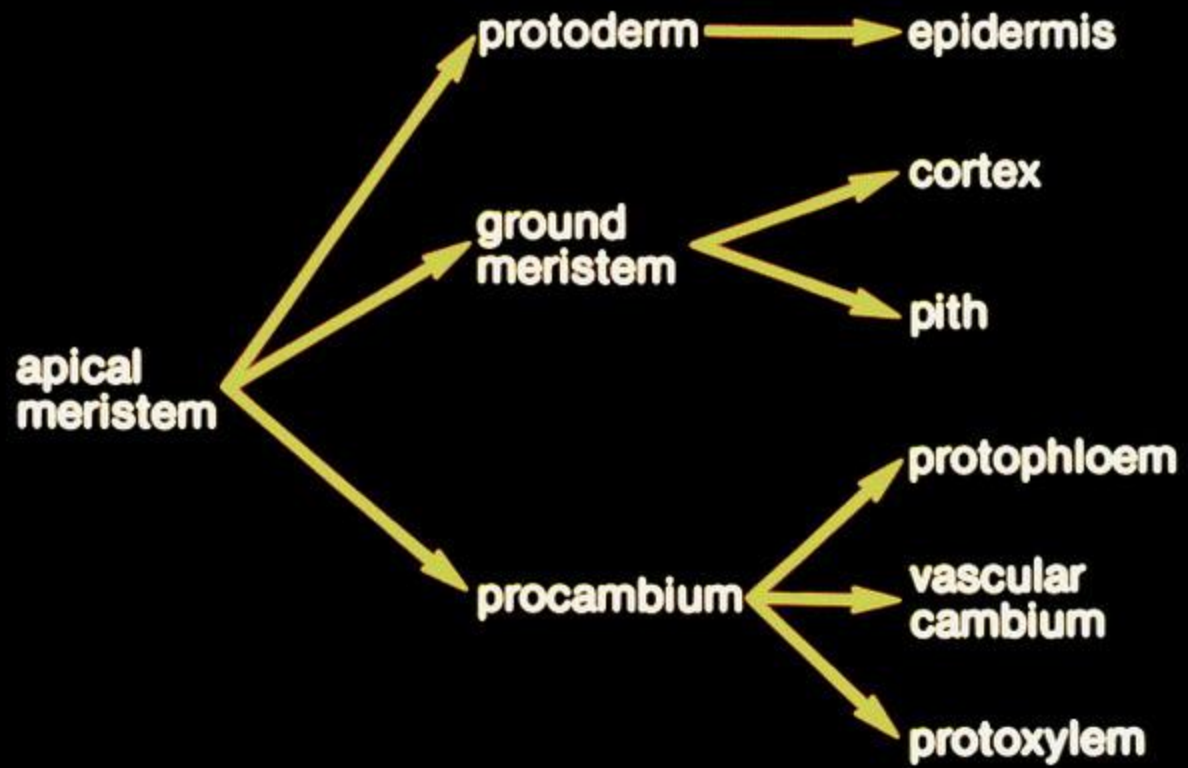
Dicot

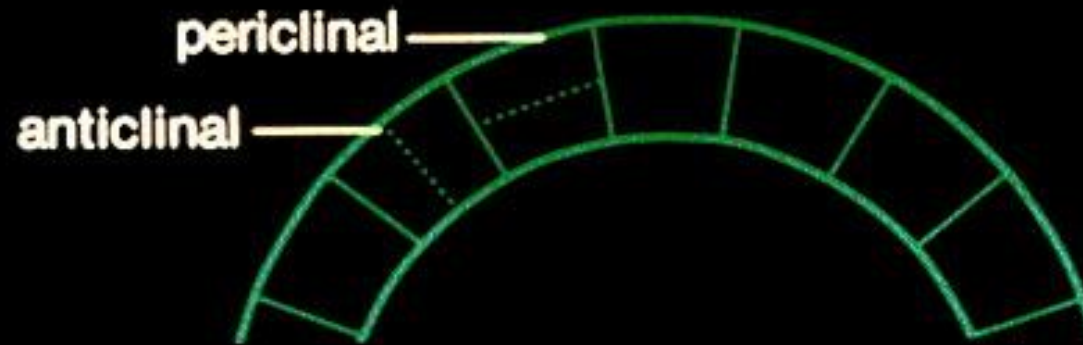


primary
thickening
meristem

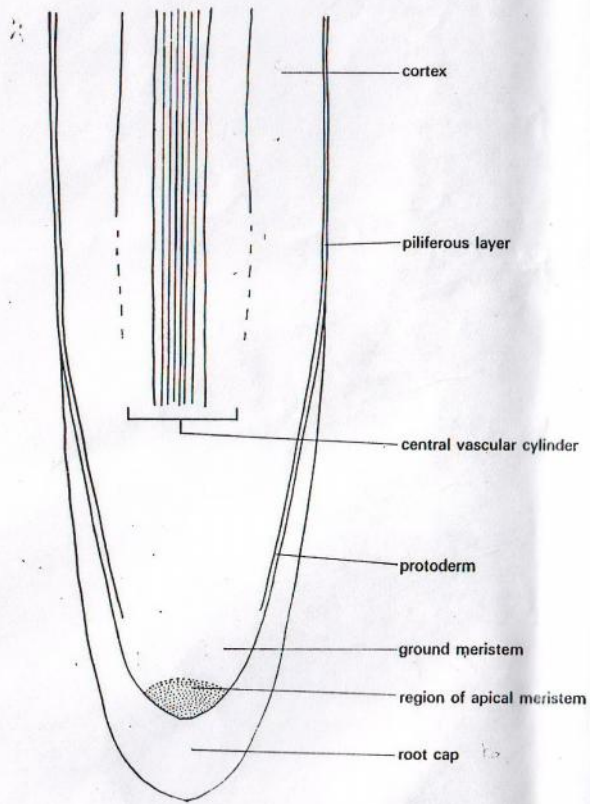
Monocot



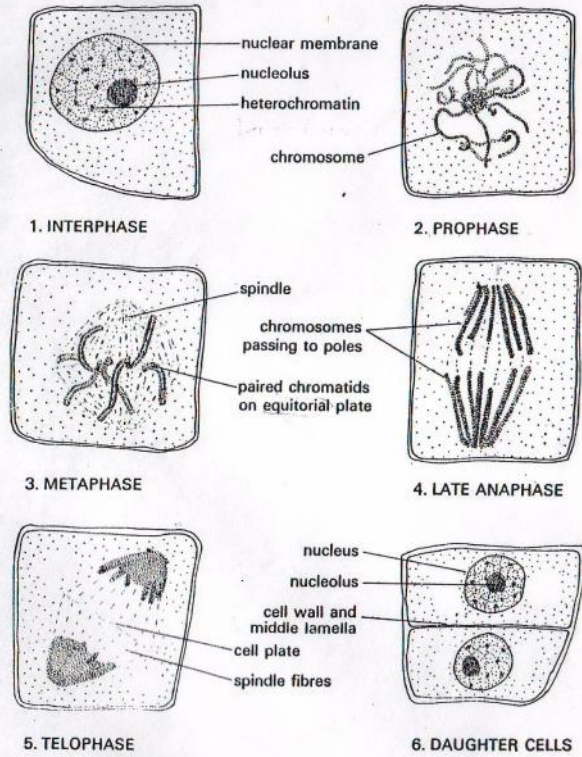




Orientations of cell division in cross section of apical meristems



Drawing of Specimen 74



Drawings from Specimen 75 showing stages in mitosis